

FEATURES

- Minimize the cost of reconfiguring the network
- Change receiver configurations remotely over the satellite link
- Web-based GUI
- .NET/WSDL API for remote control and integration
- SNMP Daemon for terrestrial network configuration
- Change RF parameters on the fly without shutting down the network
- Easy to use point and click GUI
- Individual or group addressability
- In band receiver upgrades
- Distribution of BISS key to IDC capable receivers.

Net Manager

Network Management - Satellite IP Video and Data Networks

The Net Manager is a highly reliable GUI-driven network management system designed to control DVB/IP satellite receivers using in-band communications.

Service providers often have deployed an extensive network of satellite receivers and are then faced with the daunting task of having to upgrade and reconfigure receivers already deployed and operational in a network. From satellite providers shuffling segment allocations that require new frequency assignment programming to network operators changing the carrier symbol rates to accommodate additional bandwidth, it is sometimes necessary to re-program carrier parameters for each receiver. **Net Manager** helps operators address these challenges.

Net Manager is IDC's next generation network management system designed to work with IDC's portfolio of audio, video and data products (refer to feature compatibility matrix for availability). Featuring a Web-based GUI for operator-friendly local and/or remote operation, this robust system supports multiple languages. Delivered on a highly integrated hardware/software platform.

With the ability to interface and control individual receivers, groups of receivers and entire networks via the satellite link, **Net Manager** securely maintains configuration information for each receiver. The audio, data and control outputs of compatible receivers, as well as their receive frequencies and demultiplexer parameters can be administered by **Net Manager** remotely.

Net Manager is also capable of sending upgrades in a foreground queue or continuous background queue.

Net Manager generates a UDP/IP multicast data stream which is injected into the DVB

carrier by an IP Encapsulator. This data stream is then received and interpreted by the satellite receivers as it contains addressing, authorization and routing information.

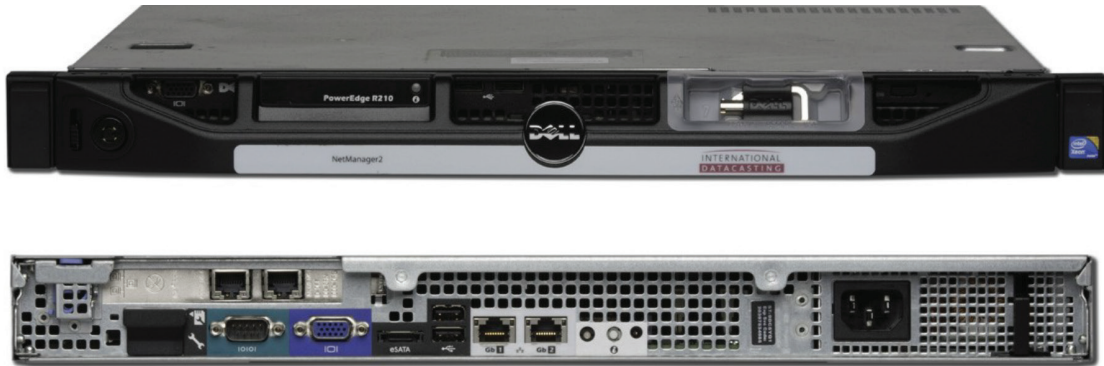
All receivers tuned to the DVB carrier receive the **Net Manager** control data stream. They decode addressing information within the IP data stream to determine which data to extract and use for configuration.

Each receiver contains a unique IDC address, and may also be a member of one or more receiver groups. Each **Net Manager** message contains either an individual IDC receiver address or a group address allowing for efficient configuration updates to as many or as few receivers as needed.

As a background task, **Net Manager** continuously transmits each receiver's configuration; ensuring the proper network configuration. The **Net Manager** message addressed to any specific receiver includes a sequence number that increments whenever a change in configuration occurs. This allows the receiver to optimize its handling of **Net Manager** messages.

The BISS decryption key, to be used by IDC receivers equipped with the BISS option, can be distributed using IDC's **Net Manager**. Only authorized receivers can receive the BISS key and thus only authorized receivers are able to perform BISS decryption. For security, and in accordance with the BISS standard, the BISS decryption key cannot be read from a receiver even if authorized by **Net Manager**.

TECHNICAL



CONTROLLED FUNCTIONALITY	SuperFlex Pro Audio	SuperFlex Pro Data SFX3104	STAR G1	STAR G2	MAP Pro Audio	MAP Pro Video	MAP Pro Data
Software upgrades foreground / background immediately or time based	•	•	•	•	•	•	•
Carriers, PIDs, CHs, IP & Port individually, Group based or globally	•	•		•	•	•	•
RTP/IP channel tuning	•	•		•	•	•	•
PES channel tuning				•	•	•	
POWER REQUIREMENTS							
Supply Voltage	100 to 240 VAC, +6%, -10%, 50 or 60 Hz						
PHYSICAL PARAMETERS							
Chassis	1U rackmount server platform						
Dimensions (H, W, D)	5.4 cm x 48 cm x 40 cm (1.75" x 19" x 16")						
Weight	8.5 kg (18 lbs.)						
ENVIRONMENTAL CONDITIONS							
Operating Temperature	0° to 50° C (32° to 122° F)						
Storage Temperature	-20° to 70° C (-4° to 158° F)						
Humidity	Maximum 90% relative, non-condensing						

